



*We Build Your Vision*

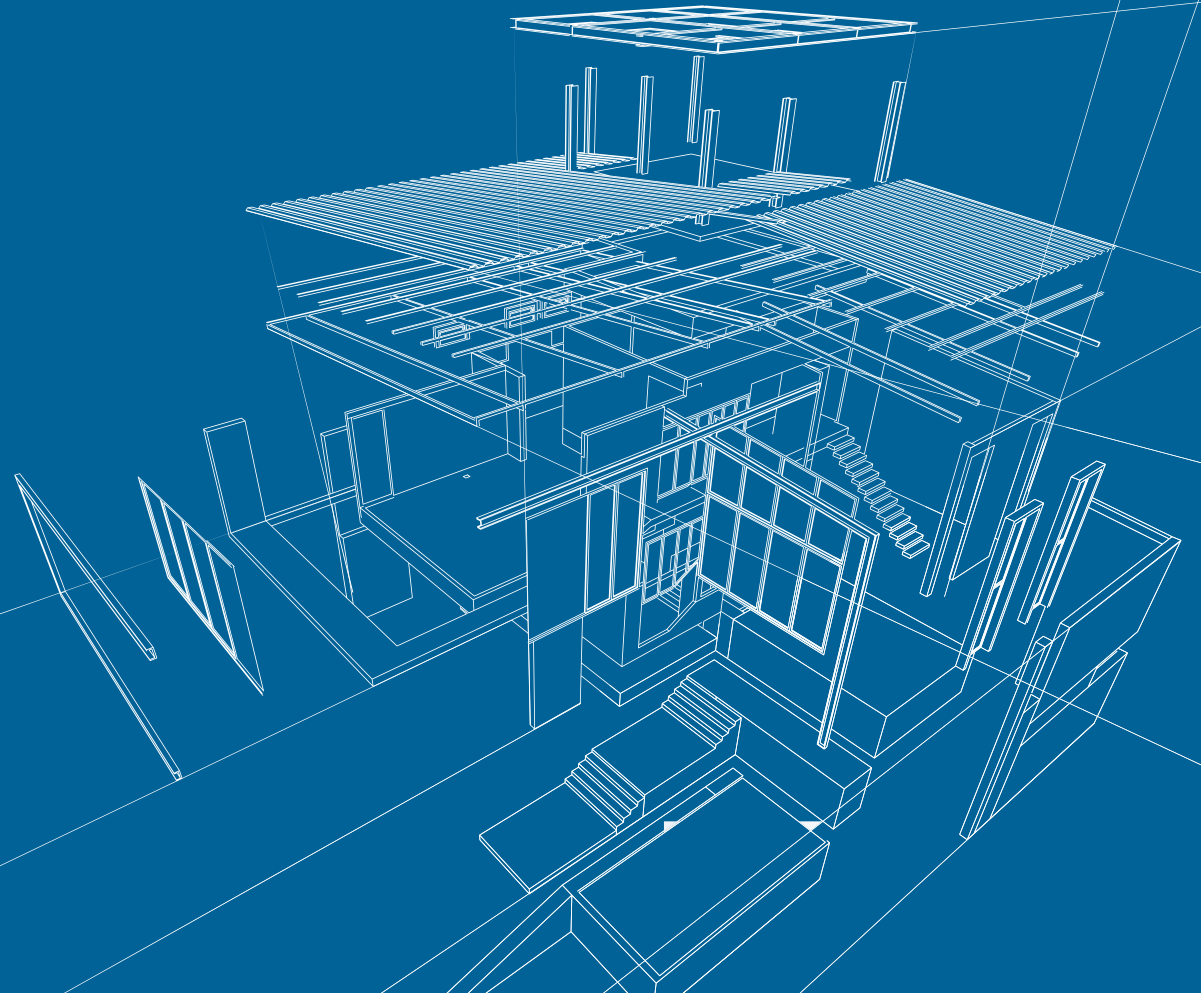
**ARAV CONTRACTS LIMITED**



# ABOUT US

Arav Contracts Ltd. is a family owned contract division of Mavani Group. The Group is been one of the most trusted and recognised construction company since 1970. We have passed the test of time and expanded since then. In present time we hold a prominent position as a contractor, builder & developer. Along with this we have also expanded with geographical perimeters, with our presence across Mumbai, Thane, Navi Mumbai, Lonavala, Pune, Gujarat & Chhattisgarh.

Founded by our grandfather Late. Shri. Harji Kanji Mavani as a mason with gradual progress as Labour Contractor, With Material Contractor, Builder & Developer. The legacy is ongoing by the 3rd generation of our family through hard & smart working. .





# OUR VALUE

## Vision

We are a family owned company, committed to becoming the contractor of choice, pursuing excellence through dedication, experience and disciplined employees with an ongoing passion to deliver quality, timely, within budget and developing lasting relationship with Clients.

## Mission

Our mission is to be a dynamic team, providing the highest quality construction services available.

## Core Values

- Work Ethic
- Accountability
- Dedication
- Safety
- Commitment
- Optimism
- Quality
- Trust
- Integrity
- Measured Performance
- Excellence



# MANAGEMENT TEAM

## **Mr. Shailesh Mavani**

Civil Engineer by qualification with 24 years experience, looks after Administration, Finance, Technical & Legal departments of all the group companies. He is passionate and enthusiastic for giving optimum results by motivating the team.

## **Mr. Nilesh Patel**

Civil Engineer by qualification with 24 years experience, looks after the Technical & Project Management. He ensures any project that he manages is carried out with precision and care whilst making sure our clients are always satisfied and looking forward to further future endeavours.

## **Mr. Bhupesh Mavani**

22 years experience, looks after the Project Management. He has a very good experience in handling the execution teams and ensures the quality is at its best.

## **Mr. Praful Mavani**

20 years experience in the construction industry and oversees all the projects that Arav Contracts Ltd. is involved with. He looks after the Project Management, Costing, Billing and Purchasing of the firm.







# SHUTTERING & MACHINERY

• Tower Crane	3	• Diesel Generator	4
• Concrete Pump	4	• RMD Kwikform	2200 sq.mtr.
• Mini Batching Plant	3	(Airodek System)	
• Reversible Concrete Mixer	3	• MS Props	15000
• Concrete Mixer	9	• Cuplock System	75 tons
• Lift Hoist	9	• ISMB	130 tons
• Steel Cutting Machine	9	• MS Square Pipes	45 tons
• Steel Bending Machine	9	• H Frame	600
Tractor Loader	3		



# COMPLETED PROJECT



**HIRANANDANI PALACE GARDENS**  
RESIDENTIAL BUILDING

Location : Panvel, Navi Mumbai  
Type : Civil work, Base + 2 podium + 30 Storey  
Area : 12,00,000 Sq.Ft.  
Project by : Hiranandani Construction

**SHETH FIONA**  
RESIDENTIAL BUILDING

Location : Thane  
Type : Civil work, Gr + 12 Floor  
Area : 70,000 Sq.Ft.  
Project by : Ashwin Sheth Group





# COMPLETED PROJECT



**PALM BEACH RESIDENCY**  
RESIDENTIAL BUILDING

Location : Nerul, Navi Mumbai  
Type : Civil work, Gr + 3 podium + 27 Storey  
Area : 2,70,000 Sq.Ft.  
Project by : The Wadhwa Group

## MONTEROSSA COMMERCIAL BUILDING

Location : Ghatkopar  
Type : Lock & Key, Gr + 6 Floor  
Area : 30,000 Sq.Ft.  
Project by : Gandhi Group



# COMPLETED PROJECT



**GAGAN UNNATI**  
RESIDENTIAL BUILDING

Location : Katraj-Kondhwa, Pune  
Type : Civil work, 2 Base + Gr + 20 Storey  
Area : 4,60,000 Sq.Ft.  
Project by : Gagan Properties

**NAV DURGA**  
RESIDENTIAL BUILDING

Location : Chembur  
Type : Civil work, Base + Gr + 14 Storey  
Area : 85,000 Sq.Ft.  
Project by : Charisma Builders





# COMPLETED PROJECT



**CASA RIO GOLD & CASA RIO**  
RESIDENTIAL BUILDING

Location : Dombivali, Thane  
Type : Civil work, Gr + 7 Floor  
Area : 1,64,000 Sq.Ft. (CASA RIO GOLD)  
: 1,75,000 Sq.Ft. (CASA RIO)  
Project by : Lodha Group

**GAGAN NU-LIFE**  
AMENITY BUILDING

Location : Kamshet, Lonavala  
Type : Civil work, 2 Base + Gr. + 5 Floors,  
Area : 1,18,000 Sq.Ft.  
Project by : Gagan Properties





# COMPLETED PROJECT

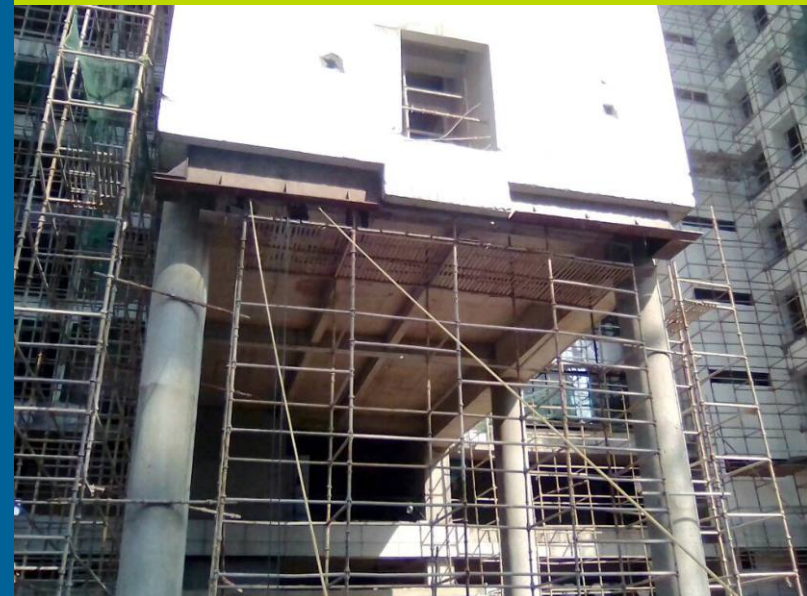


## GAGAN NU-LIFE : PHASE I & II RESIDENTIAL BUILDING

Location : Kamshet, Lonavala  
Type : Civil work. Gr. + 10 Floor  
Area : 8,10,000 Sq.ft.  
Project by : Gagan Properties

## MENTOR GRAPHICS

Location : Noida, UP  
Type : Fabrication & Erection  
Project by : Shapoorji Pallonji



# COMPLETED PROJECT

## JINDAL STEEL STRUCTURE DIVISION

Location : Punjipathra, Chattisgarh  
Type : Fabrication, Production 300 tons  
per month  
Project by : Jindal steel & Power Ltd.



**SOLARIS**  
COMMERCIAL BUILDING

Location : Saki Vihar, Andheri  
Type : Civil work, Base + Gr + 11 Floor  
Area : 1,15,000 Sq.Ft.  
Project by : Kamala Group



**MLCP - TMC**  
PARKING BUILDING

Location : Thane  
Type : Civil work, Gr + 10 Storey  
Area : 6,00,000 Sq.Ft.  
Project by : Ashwin Sheth Group

# COMPLETED PROJECT



Location : Jejuri, Pune.  
Type : Fabrication  
Area : Production 2500 Tons  
from Oct-2019 to Dec-2020  
Project by : Indiana Gratings Pvt. Ltd.



**KUNDALI TOLL PLAZA, EASTERN  
PERIPHERAL EXPRESSWAY**

Location : Sonapat, Haryana  
Type : Steel Structure, 55 m Height  
Project by : Sadbhav Engineering Ltd.



**CREST  
RESIDENTIAL BUILDING**

Location : Vile Parle, Mumbai  
Type : Lock & Key, 2 Base + Gr + 10 Floor  
Area : 1,04,000 Sq.Ft.  
Project by : Sayaji Realty



# ONGOING PROJECT

## SHANTI LUXURIA RESIDENTIAL BUILDING

Location : Shilphata, Thane  
Type : Civil work, Gr + 30 Storey  
Area : 3,30,000 Sq.Ft.  
Project by : RDP Realtors



## GHODAWAT SKYSTAR COMMERCIAL & RESIDENTIAL BUILDING

Location : Goregaon West, Mumbai  
Type : Civil work, 2 Base + Gr. + 23 Floors  
Area : 1,68,000 Sq.Ft.  
Project by : Sanjay Ghodawat Group & Unnati World



## SHANTPRABHA CHS RESIDENTIAL BUILDING

Location : Goregaon East, Mumbai  
Type : Lock & Key, Stilt + 3 Podiums + 19 Floors  
Area : 89,000 Sq.Ft.  
Project by : ShantPrabha CHS

# ONGOING PROJECT



**27 EAST**  
RESIDENTIAL BUILDING

Location : Dombivali  
Type : Civil work, Stilt + 29 storey  
Area : 1,12,000 Sq.Ft.  
Project by : Rashi Developers

**72 WEST**  
RESIDENTIAL BUILDING

Location : Andheri, Mumbai  
Type : Civil Work, 3 Base + 4 Podium + 36 Storey  
Area : 4,50,000 Sq.Ft.  
Project by : Ashwin Sheth Group



# ONGOING PROJECT



**SEA BLISS**  
RESIDENTIAL BUILDING

Location : Versova, Mumbai  
Type : Civil work, Stilt + 23 storey  
Area : 1,13,000 Sq.Ft.  
Project by : Asshna Developers

**SAYAJI ELVIRA**  
RESIDENTIAL BUILDING

Location : Vile Parle, Mumbai  
Type : Civil Work, Stilt + 1 Podium + 9 Storey  
Area : 67000 Sq.Ft.  
Project by : Sayaji Realty





# ONGOING PROJECT



**SANKALP HEIGHTS**  
RESIDENTIAL BUILDING

Location : Malad West  
Type : Civil work, 11th + 20th Floor  
Area : 36,000 Sq.Ft.  
Project by : Status Group

**SHANTI LUXURIA PHASE II**  
RESIDENTIAL BUILDING

Location : Shil Phata, Thane  
Type : Lock & Key with Basement + Stilt + 36 Floor  
Area : 380000 Sq.Ft.  
Project by : Raunak Group



# VALUABLE CLIENTS





*We Build Your Vision*

## **ARAV CONTRACTS LIMITED**

📍 B/2, Gurudutt Bldg., 2<sup>nd</sup> Floor, Patel Chowk,  
Ghatkopar (E), Mumbai - 400 077.

☎ 022 25010916 ✉ [info@arav.group](mailto:info@arav.group)

🌐 [www.arav.group](http://www.arav.group)